

**Linecard UK**



**Protec GmbH** was founded in 1976 and is successful in the sales of High Reliability components.

We are particularly specialised in highly qualified components for industrial, military and space applications.

In instances of obsolescence and supply problems, we can also offer our customers effective solutions with our extensive product and market knowledge.

Our customer orientated warehouse, equipped with a modern ESD protection system, guarantees reliable component supply.

With our design-in and market orientated expertise, we can provide long term support for your projects and applications.

Through our distributor and rep strategy, we are the "extended arm" of our Manufacturers. When required we will put you directly in touch with our manufacturer's specialists.

Our first priority is a long term, successful partnership with our customers and manufacturers.







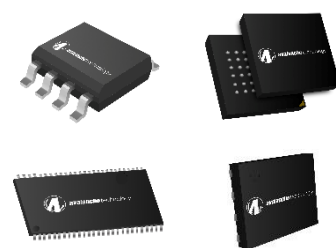
<b>Nano D</b>	Rugged Nano-D metal shell - exceed MIL-DTL-32139	9-91 contacts
<b>Micro D / High Speed</b>	Rugged Micro-D metal shell - exceed MIL-DTL-32139	9-128 contacts
<b>Macro D</b>	Rugged (3A up to 42A per contact)	8-150 contacts
<b>High Speed Rectangular</b>	Rugged - vertical board-mount, right angle board-mount, cable I/O, and flex circuit mounting	40-500 contacts
<b>SInergy</b>	Rugged - modular hybrid solution 1-5 configurable bays	up to 25Gbps
<b>Stackable</b>	high-density, board-to-board stacking	28-200 contacts
<b>Rectangular R&amp;Z Series</b>	PCB Connectors	10-604 contacts
<b>Z-Axis Interposer</b>	high-density, board-to-board or flex circuit stacking	20-175 contacts
<b>Circular</b>	Rugged - micro-miniature circular - similar performance as D38999 connectors more compact & lighter package	up to 10G
<b>Flexible Assemblies</b>	highly reliable, flexible, printed circuit assembly single-sided, double-sided, multi-layer, rigid-flex	
<b>Cable / Harness</b>	copper, RF and more — terminated with any connector	
<b>Active Optical Cables</b>	fully-qualified, Space-Rated Active Optical Cable (SAOC®) & a Rugged Active Optical Cable (RAOC®)	




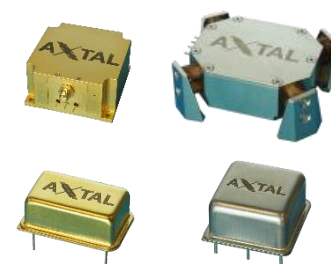
<b>LVDS</b>	EPPL → Quad Driver / Receiver and Dual Transceiver	ESA Qualified
-------------	--	---------------



<b>Parallel x32 (Gen 3)</b>	1Gb / 4Gb	75/300krad
<b>Serial D-QSPI (Gen 3)</b>	1Gb / 2Gb / 4Gb / 8Gb	75/300krad
<b>Serial QSPI (Gen 1)</b>	4Mb / 8Mb	75/300krad
<b>Serial (Gen 2)</b>	16Mb	75/300krad
<b>Parallel x16 (Gen 2)</b>	16MB / 32Mb / 64Mb	75/300krad

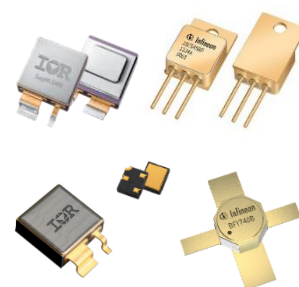


<b>OCXO</b> 	±0,005ppm / Ultra Low Noise	10MHz to 150MHz
<b>TCXO</b>	±0,5ppm	1MHz to 2,5GHz
<b>VCXO</b>	±5ppm / Low Noise	1MHz to 1,5GHz
<b>SAW Oscillator</b>	±350ppm	500MHz to 1,6GHz
<b>Quartz Filter</b>	±1ppm	10MHz to 100MHz
<b>PRECISION CRYSTALS</b>	SC, IT and AT-cut crystals for frequency control, instrumentation, military, space and other markets	Compliant to ESCC3501





N-channel MosFet	Single, Dual or Quad / 30V to 600V	100-500krad
P-channel MosFet	Single, Dual or Quad -30V to -200V	100-600krad
Diodes	Schottky, ultra fast Rectifiers	
Power ICs	MosFET Driver	100krad / 82MeV
Solid State Relays		100krad
RF Diodes		ESA QPL Parts
RF Transistors	8GHz to 42GHz	ESA QPL Parts

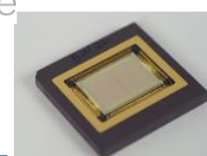


Chokes	ESA Technology Flow Qualified	Custom & Standard
Transformers	ESA Technology Flow Qualified	Custom & Standard
Inductors	ESA Technology Flow Qualified	Custom & Standard



NG-Medium	SpW & DDR 2 PHY	34KLUT
NG-Ultra	Quadcore ARM R52 @ 600MHz 32 HSSL @ 12.5 Gbps / SpW & DDR 3&4 PHY	500KLUT
NG-Ultra300	16 HSSL @ 12.5 Gbps / SpW & DDR 3&4 PHY Embedded ADCs & DACs	290KLUT

Impulse

 STMicroelectronics


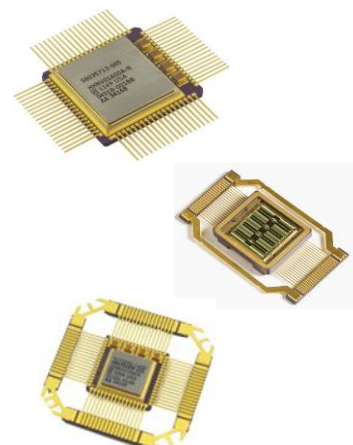
3A PoL (Point of Load)	$V_{in}$ 2,5 to 5V / $V_{out}$ 0.8 to $V_{in}$ -0,5V	100krad/110MeV
ZES100 (LDAP)	Latchup Detection and Protection / EP Package QFN32L	300krad/110MeV
ZSOM-M01	System on Module (ARM M0+ Module for LEO Missions)	RadTolerant
ZES400 Quad Voter	1,8 to 5V Supply / EP Package QFN28L	300krad/110MeV



Service Provider	Final Source Inspection or Pre-Cap Inspection	To combine with PO
------------------	---	--------------------

## Honeywell

<b>SRAM</b>	QML-Q and V (x8 or x32 configurations)	256k to 64M
<b>MRAM</b>	QML-Q and V (x8 or x16 configuration)	16M / 1M
<b>SER/DES</b>	1-4 Lines or 1-8 Lines	up to 3,125GB/s
<b>RS422</b>	Quad Driver and Reciever	20Mb/s
<b>LVDS</b>	Quad Driver and Reciever	100MHz
<b>Processors</b>	HX1750 & HXRHPPC Microprocessor	
<b>Logic</b>	Quad 2-input NAND	
<b>ADC</b>	12 Bit Monolithic / Low Power	20 MSPS
<b>DAC</b>	12 Bit Monolithic	
<b>Comparator</b>	Common mode 0V to 5V / Input Offset Voltage +/-24mV	
<b>Analog MUX</b>	8-Channel	$R_{ON} < 60\Omega$



<b>XO</b>	CMOS, TTL, LVDS, LVPECL	Single & Multiple Outputs
<b>TCXO</b>	HCMOS, Sine	$\pm 0,5\text{ppm}$
<b>VCXO</b>	HCMOS, Sine	
<b>OCXO</b>	CMOS, Sine	$\pm 10\text{ppb}$
<b>SAW</b>	Sine 400MHz to 1,3GHz - low phase noise	300krad
<b>MCXO</b>	CMOS or Sine 5 to 80MHz 1pps	50krad
<b>New Space XO</b>	QT780, QT723 and QT735 Series	50krad
<b>Specialty Oscillators</b>	combined OCXO, MCXO, TCXO, SO, VCXO, PLL & crystal filters in modules	

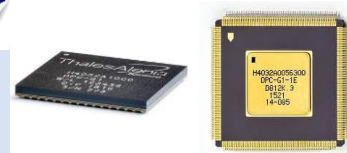


## smiths interconnect

<b>SpaceABLE 28G SL Series</b>	4TRX, 12TX, and 12RX	FM
<b>SpaceABLE 10G SL Series</b>	4TRX, 12TX, and 12RX	FM
<b>SpaceABLE 10G SM Series</b>	4TRX, 12TX, and 12RX	FM
<b>LightABLE 28G LL Series</b>	4TRX, 12TX, and 12RX	EM
<b>LightABLE 10G LL Series</b>	4TRX, 12TX, and 12RX	EM
<b>LightABLE 10G LM Series</b>	4TRX, 12TX, and 12RX	EM



<b>DPC G1</b>	16bit openMSP430 – Digital Programmable Controller >60krad / SEL >72.2MeV / SEU >40MeV 16 ADCs / 3DAC / 108 IO / PLL / PWM / Low Power 3x 30MIPS / MIL-1553 / CAN / UART / -55 to 125°C	$\mu$ Controller
---------------	--	------------------

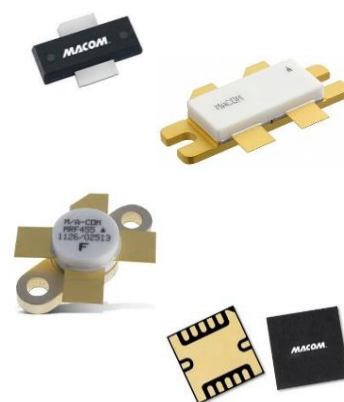




Partners from RF to Light



<b>RF - Amplifiers</b>	Gain Blocks, Low Noise, RF Power, Linear, Transimpedance	
<b>RF - Attenuators</b>	Digital, Fixed, Voltage Variable	
<b>RF - Capacitors</b>	Beam Lead, Binary Chip, Bypass, HighQ, MNS, MNOS	
<b>RF - Couplers</b>	Hybrid, Stripline, Broadband	
<b>RF - Diodes</b>	PIN, Step Recovery, Schottky, Varactor Tuning	
<b>RF - Filters</b>	Band Pass, MoCA, Horizontal & Vertical, Low Pass, Diplex, Triplex Filters	
<b>RF - Frequency Conversions</b>	Down Converter, Up Converter, Multipliers, Mixer, Receivers, Transceivers	
<b>RF - Frequency Generation</b>	Comb, Voltage Controlled	
<b>RF - Limiters</b>	C-Band to V-Band	
<b>RF - Switches</b>	Drivers, DPDT, Limiter, SPST, SPDT to SP8T	
<b>RF - Magnetics</b>	Inductors, Baluns, Transformers	
<b>Optical - Clock and Data Recovery</b>	VCEL Driver, DML Driver with CDR / TIA / EML	
<b>Optical - Receiver Modules</b>	APD Photoreceivers, PIN Photoreceivers, HighSpeed Photodetectors and Receivers	
<b>Optical - Laser</b>	Distributed Feedback Lasers, Fabry-Perot Lasers	2,5G, 10G, 25G
<b>Optical - Modulator Drivers</b>	NRZ, PAM, Coherent	Up to 58Gbps
<b>Optical - Post Amplifiers</b>	Limiting Amplifier	
<b>Optical - Photodiodes</b>	APD Photodiode, PAM4 PIN Photodiodes	10G, 25G, 50G, 100G
<b>Optical - Transimpedance</b>	Client Side, Coherent	
<b>Networking - Crosspointswitch</b>	Crosspoint Switches and Signal Conditioners	
<b>Networking - Equalizers</b>	Linear Equalizers 56 / 112 Gbps	2 and 4 Channel
<b>Networking - Processors</b>	Single or Dual-Core Power™ Processor	




A DIVISION OF OSI OPTOELECTRONICS

<b>Transistors</b>	2N3810, 2N2920, 2N2857, 2N2369, 2N3637 and more	up to JANSR/F
<b>Diodes</b>	1N5802, 1N5804, 1N5806, 1N5614, 1N5615	JANS & HC / KC die





<b>ADC</b>	Base-Band up to Ka-Band	35GHz 12.8GSps
<b>DAC</b>	Base-Band up to Ka-Band	12b 12GSps
<b>DDR4</b>	4GB and 8GB, 100krad >60MeV	Up to ECSS Class 1
<b>Processors</b>	LS1046-Space (ARM A72 @ 1.8GHz) Power PC P2020 and P8548	
<b>SiP Modules</b>	QLS1046 and DDR4 Module	



<b>Transistors</b>	NPN and PNP Small Single and Power BJTs	up to JANSR/F
<b>Diodes</b>	Zener, TC Zener, Schottky, Ultra Fast, Rectifier	up to JANS



(Non Space only no radiation guarantee)

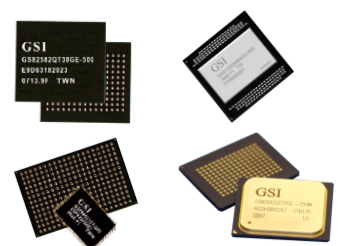
<b>DRAM Modules</b>	DDR5 (coming soon), DDR4, DDR3, DDR2, DRAM	up to 32GB
<b>STORAGE (Flash/SSD)</b>	2.5 in. SSD, 1.8 in. SSD, M.2 SSD, slimSATA, etc.	
<b>Rugged Memory</b>	ParallelCell MCP, ParallelSSD	
<b>Persistent Memory</b>	DDR4 NVDIMM, Energy SubSystems (ESS)	



<b>Inertial Measurement Unit (IMU)</b>	Low Noise, High Stability, Wide Dynamic Range (New Space)
<b>Vibration sensor</b>	High performance Vibration sensors (New Space)
<b>Accelerometer</b>	High dynamic range, low drift & digital output (New Space)



<b>SRAM also RadTolerant</b>	SigmaQuad-II+ (x18 / x32 configuration) 350 MHz	288M / 144M / 72M
<b>SRAM also RadTolerant</b>	SyncBurst & NBT (x18 / x32 configuration) 333 MHz	144M / 72M / 36M
<b>APU</b>	High Speed Paralell Computing for SAR, Imaging and AI Applications	





**General Manager**

**Christian Mayer**

General Manager

E: [c.mayer@protec-semi.com](mailto:c.mayer@protec-semi.com)

**Shlomo Manheim**

General Manager & Sales Space

T: [+49\(0\)8102/70135-89](tel:+49081027013589)

E: [s.manheim@protec-semi.com](mailto:s.manheim@protec-semi.com)

**Alan Perry**

Sales UK north

T: [+44\(0\)7377 511 302](tel:+4407377511302)

E: [a.perry@protec-semi.com](mailto:a.perry@protec-semi.com)



**Gary Rose**

Sales UK south

T: [+44\(0\)7517 929 063](tel:+4407517929063)

E: [g.rose@protec-semi.com](mailto:g.rose@protec-semi.com)



## Monopoly



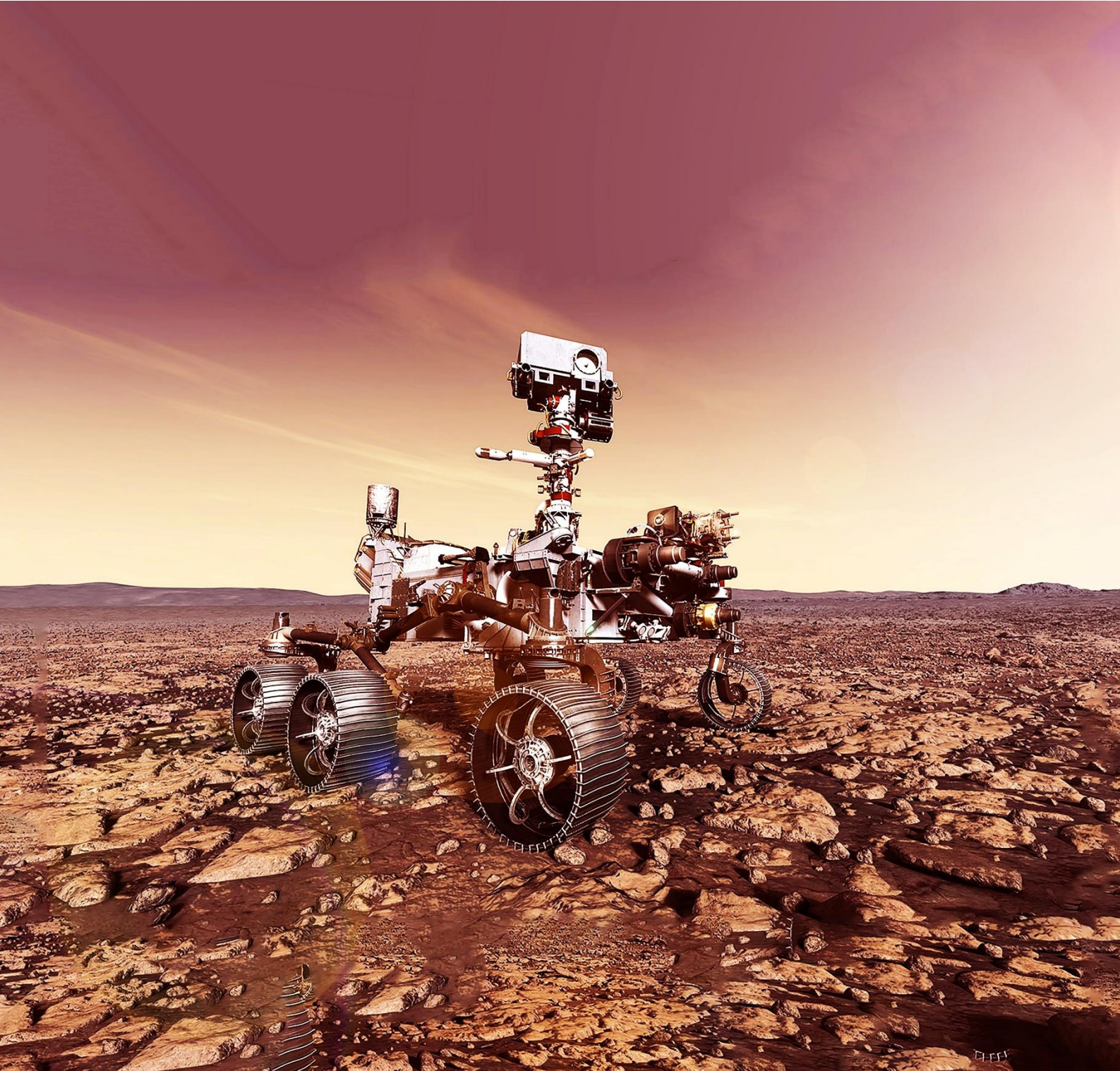
What we can offer



## HISTORICAL BRAND NAMES OF SUPPLIERS

following Brands are still known, either sold or renamed, we might be able to help you





Friedrich-Bergius-Straße 12  
85662 Hohenbrunn  
Germany

Phone: +49 8102 70135-0

E-Mail: [sales@protec-semi.com](mailto:sales@protec-semi.com) | Web: [www.protec-semi.com](http://www.protec-semi.com)